



SUPERIOR
UNIVERSITY

LOREM IPSUM
INFOGRAPHIC

BS Data Science

FACULTY OF COMPUTER SCIENCE & INFORMATION TECHNOLOGY



RANKED NO. 1 IN
QUALITY OF EDUCATION
IN PAKISTAN

WORLD RANK IN
QUALITY OF EDUCATION
101-200

OVERALL RANK IN
WORLD'S TOP
401-600

AMONG THE
TOP 10
UNIVERSITIES OF
PAKISTAN



3 Years in University and 1 year in Market

3U1M is our unique and distinctive framework which is focused on enabling and empowering the youth to create social and economic impact. This research-informed experiential learning program has been designed to ensure student success by teaching not only theories but their practical implications to equip our students with the skills of 21st-century graduates. This employability ensured program is a milestone in our mission for developing an economically Superior Pakistan.

Year 2 - Exploration PBL 2

In year 2 students explore the emerging concepts of the relevant industry and gain experiential learning through Project based learning Level 2.

Freshman Program

A rigorous on-boarding program for a smooth transition to university education through IQ & EQ Accelerators preparing students for entering university life.

1M-Market Intensive Year

For the final Market Intensive Year "1M" (one year in the market), we have designed four indigenous career streams i.e., Design Challenge, Startup, Scaleup & Superior Go Global so our students may choose any track according to their aptitude.

Career Pathways

Startup: to become a successful entrepreneur by getting incubated at our **Innovation District 92 (ID-92)**



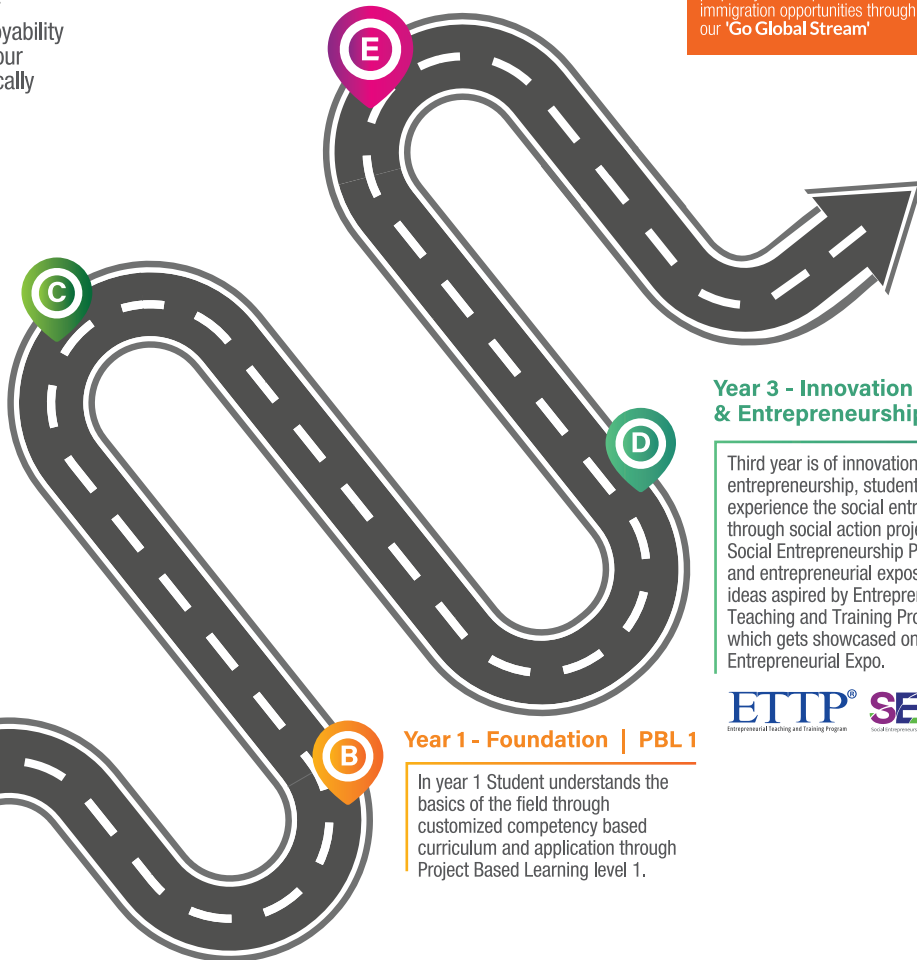
Scaleup: to uplift your family business by getting trained at our accelerator **"ScaleupPk"**



Design Challenge: to become a valuable resource for corporate world by solving a real-time industry problem following **Design Thinking** approach



Superior Go Global: to prepare you to explore career and immigration opportunities through our **'Go Global Stream'**



Year 3 - Innovation & Entrepreneurship | PBL 3

Third year is of innovation and entrepreneurship, students will experience the social entrepreneurship through social action projects under Social Entrepreneurship Program (SEP) and entrepreneurial exposition of new ideas aspired by Entrepreneurship Teaching and Training Program (ETTP) which gets showcased on Superior Entrepreneurial Expo.



Year 1 - Foundation | PBL 1

In year 1 Student understands the basics of the field through customized competency based curriculum and application through Project Based Learning level 1.

BS

Data Science

Superior University's BS Data Science program is designed to help students make sense of the enormous volumes of data generated as a result of the modern data revolution. The curriculum enables the students to develop sophisticated computing techniques in order to process this pile of information by developing expertise in machine learning, data mining, and algorithmic complexity as well as skills development in mathematical and statistical modelling and algorithm design.

Course Duration	4 Years
Semesters	8
Total Credit Hours	131

Eligibility

Intermediate or Equivalent with 50 % Marks

Semester 1

Programming Fundamentals	4
Introduction to Information & Communication Technologies	4
University Elective-1	3
Discrete Structures	3
English Composition & Comprehension	3

Semester 4

Database Systems	4
Operating Systems	4
Differential Equations	3
DS Elective-1	3
Introduction to Data Science	3

Semester 2

Object Oriented Programming	4
Pakistan Studies	2
Communication & Presentation Skills	3
Probability and Statistics	3
Islamic Studies	2
Calculus & Analytical Geometry	3

Semester 5

Advance Statistics	3
Software Engineering	3
Computer Networks	4
Analysis of Algorithms	3
Digital Logic Design	4

Semester 7

Final Year Project-I	3
DS Elective-4	3
University Elective-3	3
Big Data Analytics	3
Parallel & Distributed Computing	3

Semester 3

Data Structures & Algorithms	4
Technical & Business Writing	3
Artificial Intelligence	4
Information Security	3
Linear Algebra	3

Semester 6

DS Elective-2	3
Computer Org. & Assembly Language	4
University Elective-2	3
DS Elective-3	3
Data Mining	3

Semester 8

Final Year Project-II	3
University Elective-4	3
Professional Practices	3
Data Visualization	3
Data Warehousing & Business Intel.	3



3U1M[®] WITH GLOBAL EXPERIENCE

CAREER SCOPE

- Working as a data scientist in multinational corporations
- Opportunity to start your own data analytics firm
- Offering freelance services relating to data science and data analytics
- Global exposure for higher education, internship, job or immigration through 3U1M Stream 'Superior Go Global'

DISTINCTIVE FEATURES

- Purpose-built campus featuring state-of-the-art facilities
- Reputable international certifications and industry-centric projects
- Developing expertise in machine learning, data mining, and algorithmic complexity

To apply online, please visit
admissions.superior.edu.pk
042-111-00-00-78



University Campus, Lahore

17-KM, Main Raiwind Road, Lahore.
Ph: 042-38103777

Sargodha Campus

10-KM, Lahore Road, Sargodha.
Ph: 048-211-00-00

Faisalabad Campus

13-KM Satiana Road, Near Khanuana
Bypass, Faisalabad. Ph: 041-8792007-8

Rahim Yar Khan

East Bank Sadiq Canal Road, Darri Sanghi,
Rahim Yar Khan. Ph: 068-5958009