



SUPERIOR  
UNIVERSITY

**BS Fine Art**

**FACULTY OF ART & DESIGN**



**RANKED NO. 1** IN  
QUALITY OF EDUCATION  
IN PAKISTAN

WORLD RANK IN  
QUALITY OF EDUCATION  
**101-200**

OVERALL RANK IN  
WORLD'S TOP  
**401-600**

AMONG THE  
**TOP 10**  
UNIVERSITIES OF  
PAKISTAN



## 3 Years in University and 1 year in Market

3U1M is our unique and distinctive framework which is focused on enabling and empowering the youth to create social and economic impact. This research-informed experiential learning program has been designed to ensure student success by teaching not only theories but their practical implications to equip our students with the skills of 21st-century graduates. This employability ensured program is a milestone in our mission for developing an economically Superior Pakistan.

### Year 2 - Exploration PBL 2

In year 2 students explore the emerging concepts of the relevant industry and gain experiential learning through Project based learning Level 2.

### Freshman Program

A rigorous on-boarding program for a smooth transition to university education through IQ & EQ Accelerators preparing students for entering university life.

### 1M-Market Intensive Year

For the final Market Intensive Year "1M" (one year in the market), we have designed four indigenous career streams i.e., Design Challenge, Startup, Scaleup & Superior Go Global so our students may choose any track according to their aptitude.

## Career Pathways

**Startup:** to become a successful entrepreneur by getting incubated at our **Innovation District 92 (ID-92)**



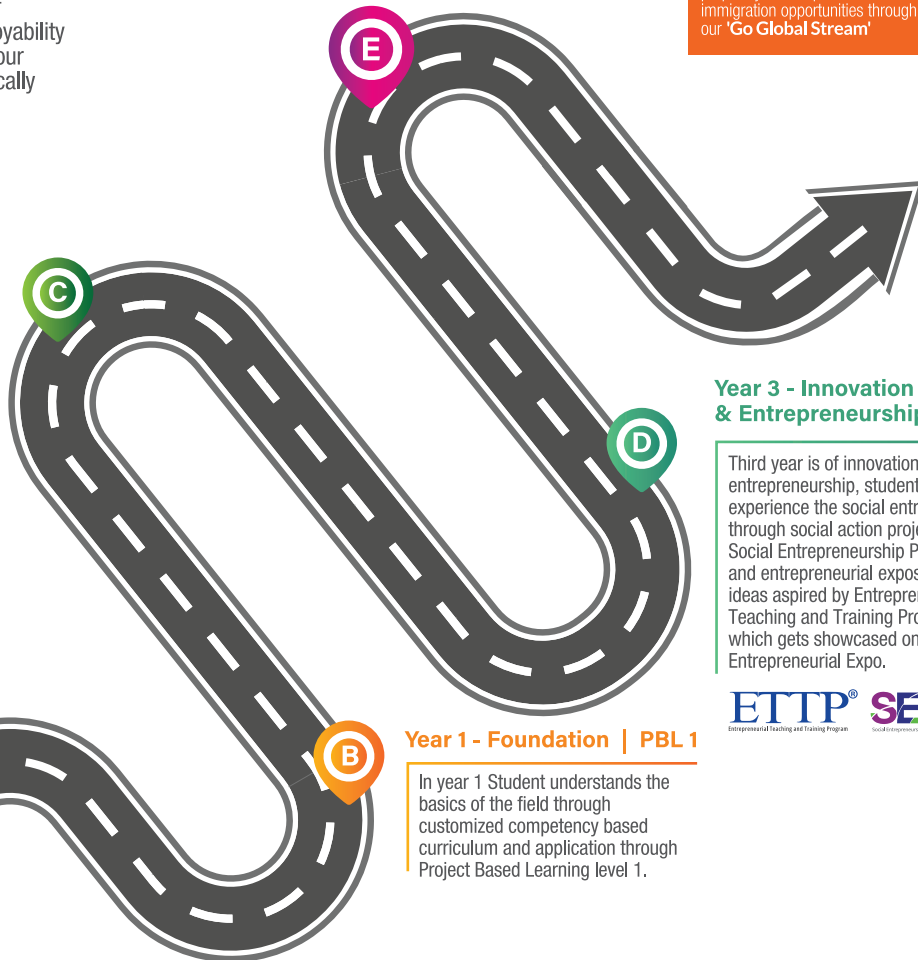
**Scaleup:** to uplift your family business by getting trained at our accelerator **"ScaleupPk"**



**Design Challenge:** to become a valuable resource for corporate world by solving a real-time industry problem following **Design Thinking** approach



**Superior Go Global:** to prepare you to explore career and immigration opportunities through our **'Go Global Stream'**



### Year 3 - Innovation & Entrepreneurship | PBL 3

Third year is of innovation and entrepreneurship, students will experience the social entrepreneurship through social action projects under Social Entrepreneurship Program (SEP) and entrepreneurial exposition of new ideas aspired by Entrepreneurship Teaching and Training Program (ETTP) which gets showcased on Superior Entrepreneurial Expo.



### Year 1 - Foundation | PBL 1

In year 1 Student understands the basics of the field through customized competency based curriculum and application through Project Based Learning level 1.

The BS Textile Design at Superior facilitates a comprehensive understanding of textiles, real-world industry experience, and a portfolio that highlights the students' creative talents to ensure their employability when they graduate. Aided by top-notch digital and traditional knit, print, and weave equipment, this program nurtures core skills enabling the students to create contemporary design collections and products and potentially establish a rewarding entrepreneurial venture of their own.

Course Duration	4 Years
Semesters	8
Total Credit Hours	136

## Eligibility

45 % marks in Intermediate or equivalent.

### Semester 1

Design Studio- I	3
Drawing - I	3
Introduction to Computer	3
English - I	3
Art History	3
Mathematics - I	3

### Semester 4

Psychology	3
Painting - II (Figure in Content)	3
Miniature Tradition	3
Drawing - IV	3
Techniques of Painting/Material & Process - II	3
English - IV	3

### Semester 2

Design Studio - II	3
Drawing - II	3
Introduction to Business	3
English - II	3
Mathematics - II	3
Islamic Studies	2

### Semester 5

Sculpture	3
Painting - III (Composition)	3
Cultural Studies - I	3
History of Western Arts - I	3
Social Entrepreneurship	3
Miniature Painting	3

### Semester 7

Calligraphy	3
Painting - VI (Composition)	3
Art Appreciation in Modern Arts - I	3
Socio Cultural Studies - I	3
Final Year Project - I	3

### Semester 3

Painting - I (Landscape & Still Life)	3
English - III	3
Pakistan Studies	2
Techniques of painting/Material & Process - I	3
Drawing - III	3
Graphic Arts	3

### Semester 6

Painting - IV (Landscape & Still Life)	3
Painting - V (Figure in the Context & Composition)	3
Cultural Studies - II	3
History of Western Arts - II	3
Entrepreneurship	3
Drawing - V	3

### Semester 8

Research Methodology	3
Final Year Project - II	3
Art Appreciation in Modern Arts - II	3
Drawing - VII	3
Socio Cultural Studies - II	3



# 3U1M<sup>®</sup> WITH GLOBAL EXPERIENCE

## CAREER SCOPE

- Land jobs as Museum Manager, Art Director, and Art Critic
- Start your career as Fine Artist, Cartoonist, and Illustrator
- Acquire employment as a Teacher in top educational institutes
- Opportunities to seek global exposure for higher education, internship, job or immigration through 3U1M Stream 'Superior Go Global'

## DISTINCTIVE FEATURES

- Industrial linkage to stay upto dated with global trends
- Internationally qualified faculty boasting exceptional research profile
- Synergised experiential & futuristic learning

To apply online, please visit  
[admissions.superior.edu.pk](https://admissions.superior.edu.pk)  
**042-111-00-00-78**



### University Campus, Lahore

17-KM, Main Raiwind Road, Lahore.  
Ph: 042-38103777

### Sargodha Campus

10-KM, Lahore Road, Sargodha.  
Ph: 048-211-00-00

### Faisalabad Campus

13-KM Satiana Road, Near Khanuana  
Bypass, Faisalabad. Ph: 041-8792007-8

### Rahim Yar Khan

East Bank Sadiq Canal Road, Darri Sanghi,  
Rahim Yar Khan. Ph: 068-5958009