



SUPERIOR
UNIVERSITY



BS Healthcare Management

FACULTY OF BUSINESS & MANAGEMENT SCIENCES



RANKED NO. 1 IN
QUALITY OF EDUCATION
IN PAKISTAN

WORLD RANK IN
QUALITY OF EDUCATION
101-200

OVERALL RANK IN
WORLD'S TOP
401-600

AMONG THE
TOP 10
UNIVERSITIES OF
PAKISTAN

3U1M[®]

3 Years in University and 1 year in Market

3U1M is our unique and distinctive framework which is focused on enabling and empowering the youth to create social and economic impact. This research-informed experiential learning program has been designed to ensure student success by teaching not only theories but their practical implications to equip our students with the skills of 21st-century graduates. This employability ensured program is a milestone in our mission for developing an economically Superior Pakistan.

Year 2 - Exploration PBL 2

In year 2 students explore the emerging concepts of the relevant industry and gain experiential learning through Project based learning Level 2.

Freshman Program

A rigorous on-boarding program for a smooth transition to university education through IQ & EQ Accelerators preparing students for entering university life.

1M-Market Intensive Year

For the final Market Intensive Year "1M" (one year in the market), we have designed four indigenous career streams i.e., Design Challenge, Startup, Scaleup & Superior Go Global so our students may choose any track according to their aptitude.

Career Pathways

Startup: to become a successful entrepreneur by getting incubated at our **Innovation District 92 (ID-92)**



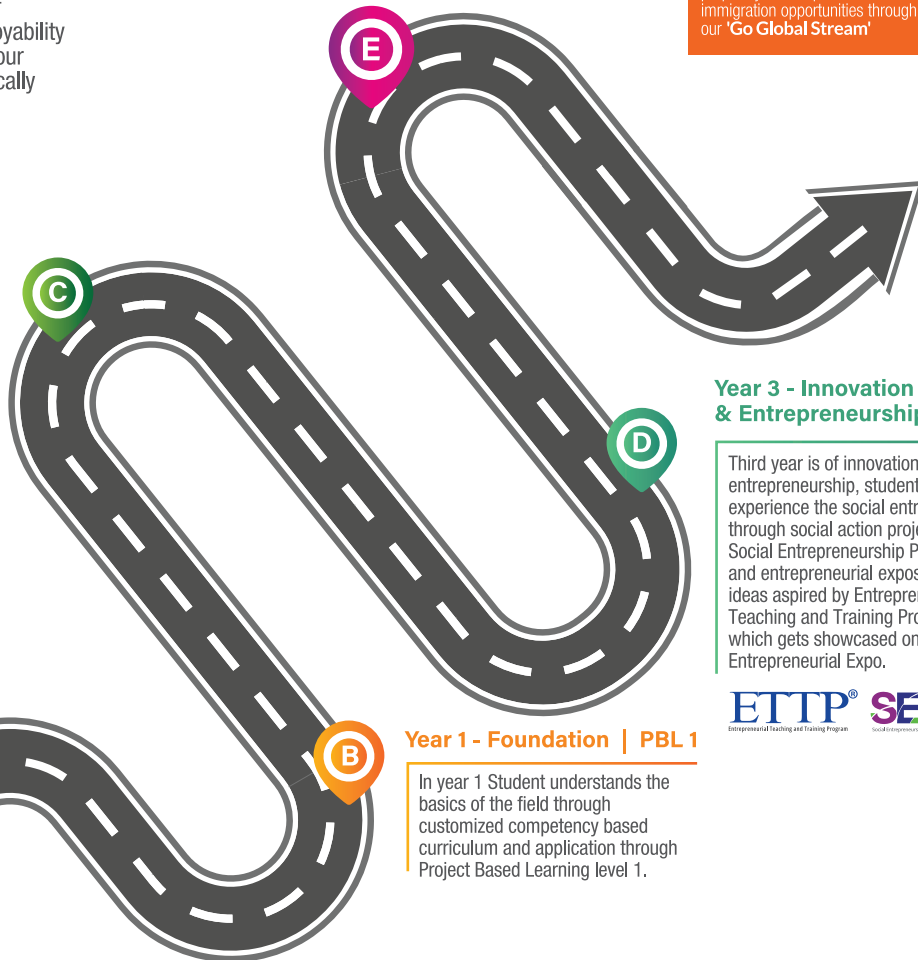
Scaleup: to uplift your family business by getting trained at our accelerator "ScaleupPk"



Design Challenge: to become a valuable resource for corporate world by solving a real-time industry problem following **Design Thinking** approach



Superior Go Global: to prepare you to explore career and immigration opportunities through our 'Go Global Stream'



Year 3 - Innovation & Entrepreneurship | PBL 3

Third year is of innovation and entrepreneurship, students will experience the social entrepreneurship through social action projects under Social Entrepreneurship Program (SEP) and entrepreneurial exposition of new ideas aspired by Entrepreneurship Teaching and Training Program (ETTP) which gets showcased on Superior Entrepreneurial Expo.



Year 1 - Foundation | PBL 1

In year 1 Student understands the basics of the field through customized competency based curriculum and application through Project Based Learning level 1.

BS

Healthcare Management

The BS Healthcare Management program accentuates the management capabilities and leadership skills of the students who wish to pursue careers within health care, social care and third sector organisations. The program is designed to support the enhancement of the students' abilities to think creatively and apply entrepreneurial skills in leading the delivery of quality health and social care services and responding to the global health challenges now and in the future.

Course Duration	4 Years
Semesters	8
Total Credit Hours	130

Eligibility

Intermediate or equivalent.

Semester 1

Introduction of HealthCare Management & Terminologies	3
English For Academics Purposes	3
Principles of Management	3
Business Mathematics	3
Islamic Studies	2
Medical Ethics and social responsibilities	3

Semester 4

Human Resource Management	3
Health Care Systems	3
Public /Global health and sustainability	3
Disaster & Risk Management in Health care	3
Strategic Leadership	3

Semester 2

Business Communication Skills	3
Organizational / Behavioral Psychology	3
Introduction to Computer	3
Health care policy and system of Pakistan	3
Theories of Healthcare Behaviour	3
Pak Studies	2

Semester 5

Financial Accounting	3
Health care Quality and Patient safety	3
Health Promotion and Marketing strategies	3
Strategic planning and leadership in Health care management	3
Active Citizenship	3

Semester 7

Supply Chain in Health Care	3
Project Management	3
Health Care Decision Making and Decision Support Systems	3
Managing Operations in Health Care Organizations	3
Digital and Tele Practices in Health care Management	3
FYP-I	3

Semester 3

Advance Communication Skills	3
HealthCare Marketing	3
Bio-Statistics	3
Planning of public Health Program	3
Healthcare Management Information System	3

Semester 6

Research methods in Health care	3
Strategies of Health Communication & Wellness	3
International Health care policy and laws	3
Entrepreneurship in Health care	3
Health institution and Hospital management	3

Semester 8

Public and Media Relations	3
Financial Management	3
Contemporary issues in Health care Management	3
Hospital Infection Control & Biomedical Waste Management	3
Medical First aid & Basics	3
FYP-II	3

To accommodate modern trends, University reserves the right to change course requirements, fee, course classifications, course content, class schedule, venue, faculty and the like, whenever it deems appropriate.



3U1M[®] WITH GLOBAL EXPERIENCE

CAREER SCOPE

- Secure employment in the top multinational pharmaceutical companies
- Land jobs in the top medical schools of Pakistan
- Become a researcher in the field of healthcare management
- Opportunities to seek global exposure for higher education, internship, job or immigration through 3U1M Stream 'Superior Go Global'

DISTINCTIVE FEATURES

- Healthcare professionals channelized through MOU with different medical facilities
- Pioneer in the emerging fields of management sciences in Pakistan
- Superior's own hospital helps the students in starting a promising career

To apply online, please visit
admissions.superior.edu.pk
042-111-00-00-78



University Campus, Lahore

17-KM, Main Raiwind Road, Lahore.
Ph: 042-38103777

Sargodha Campus

10-KM, Lahore Road, Sargodha.
Ph: 048-211-00-00

Faisalabad Campus

13-KM Satiana Road, Near Khanuana
Bypass, Faisalabad. Ph: 041-8792007-8

Rahim Yar Khan

East Bank Sadiq Canal Road, Darri Sanghi,
Rahim Yar Khan. Ph: 068-5958009