



**SUPERIOR
UNIVERSITY**

BS Islamic Banking and Finance

FACULTY OF ECONOMICS & COMMERCE



**RANKED NO. 1 IN
QUALITY OF EDUCATION
IN PAKISTAN**

WORLD RANK IN
QUALITY OF EDUCATION
101-200

OVERALL RANK IN
WORLD'S TOP
401-600

AMONG THE
TOP 10
UNIVERSITIES OF
PAKISTAN

3U1M[®]

3 Years in University and 1 year in Market

3U1M is our unique and distinctive framework which is focused on enabling and empowering the youth to create social and economic impact. This research-informed experiential learning program has been designed to ensure student success by teaching not only theories but their practical implications to equip our students with the skills of 21st-century graduates. This employability ensured program is a milestone in our mission for developing an economically Superior Pakistan.

Year 2 - Exploration PBL 2

In year 2 students explore the emerging concepts of the relevant industry and gain experiential learning through Project based learning Level 2.

Freshman Program

A rigorous on-boarding program for a smooth transition to university education through IQ & EQ Accelerators preparing students for entering university life.

1M-Market Intensive Year

For the final Market Intensive Year "1M" (one year in the market), we have designed four indigenous career streams i.e., Design Challenge, Startup, Scaleup & Superior Go Global so our students may choose any track according to their aptitude.

Career Pathways

Startup: to become a successful entrepreneur by getting incubated at our **Innovation District 92 (ID-92)**



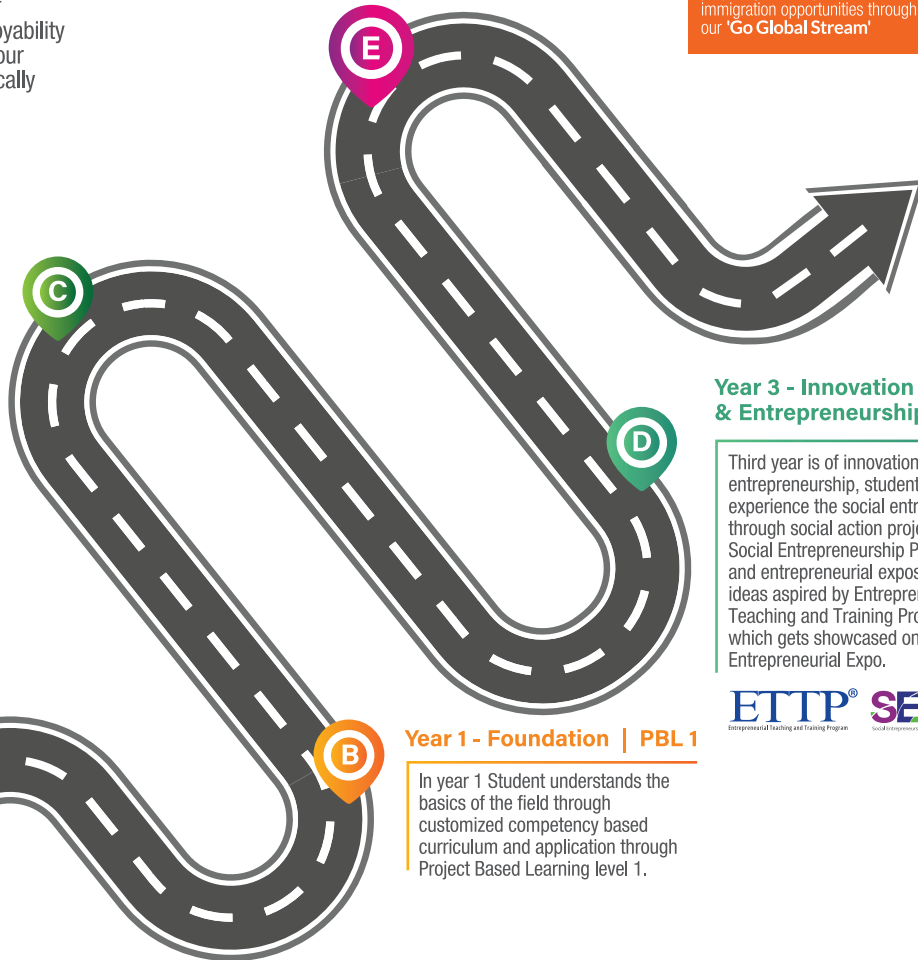
Scaleup: to uplift your family business by getting trained at our accelerator "ScaleupPk"



Design Challenge: to become a valuable resource for corporate world by solving a real-time industry problem following **Design Thinking** approach



Superior Go Global: to prepare you to explore career and immigration opportunities through our 'Go Global Stream'



Year 3 - Innovation & Entrepreneurship | PBL 3

Third year is of innovation and entrepreneurship, students will experience the social entrepreneurship through social action projects under Social Entrepreneurship Program (SEP) and entrepreneurial exposition of new ideas aspired by Entrepreneurship Teaching and Training Program (ETTP) which gets showcased on Superior Entrepreneurial Expo.



Year 1 - Foundation | PBL 1

In year 1 Student understands the basics of the field through customized competency based curriculum and application through Project Based Learning level 1.

BS

Islamic Banking and Finance

BS Islamic Banking & Finance at The Superior University, helps the students to understand the structure, functions, processes, and management of Islamic financial institutions amidst growing demand for trained professionals in the field. The faculty puts special emphasis on teaching the students in accordance with the latest applications of Islamic principles and methods in Shariah -based banking, finance, and governance preparing them to work for Islamic or conventional banks as well as Mudarabah and Takaful firms.

Course Duration	4 Years
Semesters	8
Total Credit Hours	130

Eligibility

Intermediate or Equivalent.

Semester 1

Managing People	3
Micro Economics	3
Functional English - I	3
Islamic Studies	2
Introduction to Sociology	3
Computer Application in Business	3

Semester 4

Business Law	3
Islamic Banking and Finance	3
Introduction to Psychology	3
Advanced Communication Skills	3
Auditing and Internal Control	3

Semester 2

Financial Accounting	3
Business Mathematics	3
Cost Accounting	3
Functional English - II	3
Pak Studies	2
Macro Economics	3

Semester 5

Entrepreneurship	3
Principles of Islamic Jurisprudence	3
Islamic Bait ul Mal	3
Economic Development of Pakistan	3
Quantitative Techniques in Business	3
Islamic Microfinance	3

Semester 7

Business Ethics and Islam	3
Takaful/Islamic Insurance	3
Islamic Business and Trade	3
Advanced Islamic Jurisprudence	3
Final Year Project - I	3

Semester 3

Principles of Marketing	3
Business Statistics	3
Money Banking and Finance	3
History of Islamic Business and Trade	3
Business Communication	3

Semester 6

Islamic Economies	3
Business Research and Methods	3
Islamic Business and Commercial Law	3
Fiqh ul Mamilat	3
Organizational Behavior and Leadership Skills	3
Foreign Language	3

Semester 8

Shariah Auditing	3
Islamic SME Financing	3
Advanced Fiqh ul Mamilat	3
Final Year Project - II	3
Islamic Product Development	3

To accommodate modern trends, University reserves the right to change course requirements, fee, course classifications, course content, class schedule, venue, faculty and the like, whenever it deems appropriate.



3U1M[®] WITH GLOBAL EXPERIENCE

CAREER SCOPE

- Become an Islamic fund and asset management expert
- Secure employment as a Takaful and Ijarah expert and Islamic funds and asset manager
- Land jobs in the top Islamic banks of the country
- Acquire jobs as a Shariah advisor in the top consultancy firms in Pakistan
- Opportunities to seek global exposure for higher education, internship, job or immigration through 3U1M Stream 'Superior Go Global'

DISTINCTIVE FEATURES

- Specially designed curriculum in accordance with the latest applications of Islamic principles
- Promoting Thought Leadership, Integrity, and inclusive Islamic business practices
- Emphasis on developing quantitative and analytical skillset

To apply online, please visit
admissions.superior.edu.pk
042-111-00-00-78



University Campus, Lahore

17-KM, Main Raiwind Road, Lahore.
Ph: 042-38103777

Sargodha Campus

10-KM, Lahore Road, Sargodha.
Ph: 048-211-00-00

Faisalabad Campus

13-KM Satiana Road, Near Khanuana
Bypass, Faisalabad. Ph: 041-8792007-8

Rahim Yar Khan

East Bank Sadiq Canal Road, Darri Sanghi,
Rahim Yar Khan. Ph: 068-5958009