



SUPERIOR
UNIVERSITY



BS Occupational Therapy

FACULTY OF ALLIED HEALTH SCIENCES



RANKED NO. 1 IN
QUALITY OF EDUCATION
IN PAKISTAN

WORLD RANK IN
QUALITY OF EDUCATION
101-200

OVERALL RANK IN
WORLD'S TOP
401-600

AMONG THE
TOP 10
UNIVERSITIES OF
PAKISTAN

3U1M[®]

3 Years in University and 1 year in Market

3U1M is our unique and distinctive framework which is focused on enabling and empowering the youth to create social and economic impact. This research-informed experiential learning program has been designed to ensure student success by teaching not only theories but their practical implications to equip our students with the skills of 21st-century graduates. This employability ensured program is a milestone in our mission for developing an economically Superior Pakistan.

Year 2 - Exploration PBL 2

In year 2 students explore the emerging concepts of the relevant industry and gain experiential learning through Project based learning Level 2.

Freshman Program

A rigorous on-boarding program for a smooth transition to university education through IQ & EQ Accelerators preparing students for entering university life.

1M-Market Intensive Year

For the final Market Intensive Year "1M" (one year in the market), we have designed four indigenous career streams i.e. Design Challenge, Startup, Scaleup, & Superior Go Global so our students may choose any track according to their aptitude.

Career Pathways

Startup: to become a successful entrepreneur by getting incubated at our **Innovation District 92 (ID-92)**



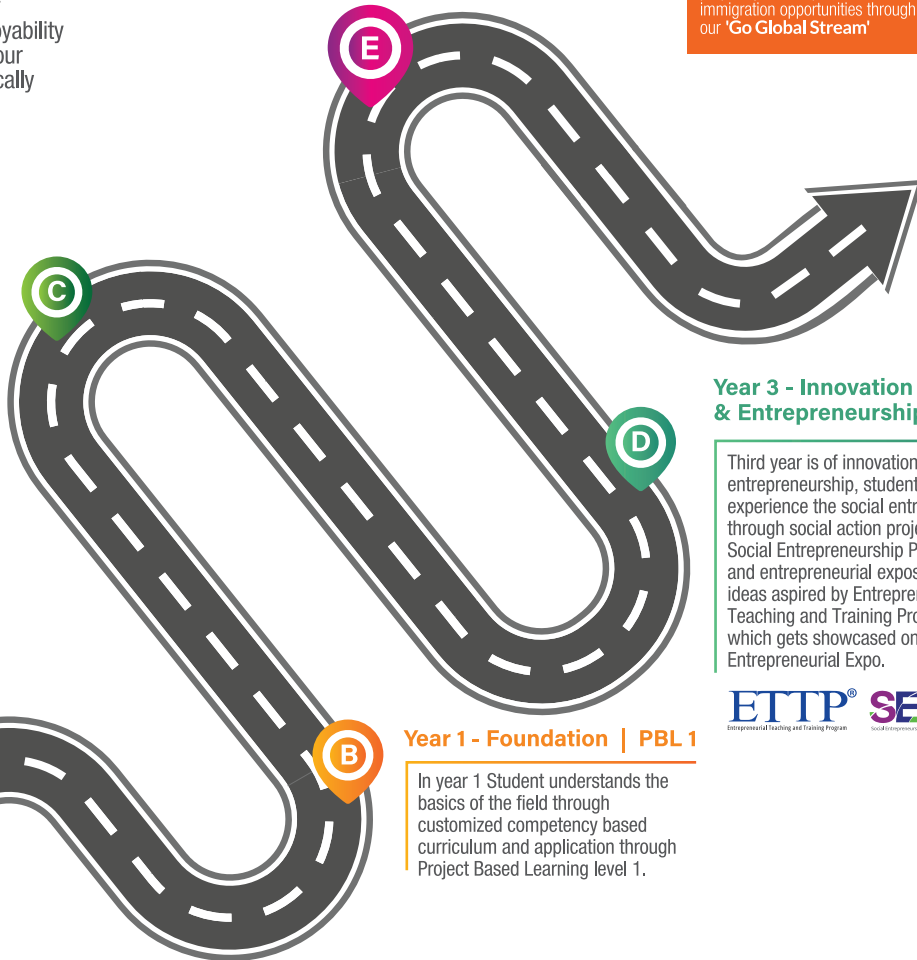
Scaleup: to uplift your family business by getting trained at our accelerator "ScaleupPk"



Design Challenge: to become a valuable resource for corporate world by solving a real-time industry problem following **Design Thinking** approach



Superior Go Global: to prepare you to explore career and immigration opportunities through our 'Go Global Stream'



Year 3 - Innovation & Entrepreneurship | PBL 3

Third year is of innovation and entrepreneurship, students will experience the social entrepreneurship through social action projects under Social Entrepreneurship Program (SEP) and entrepreneurial exposition of new ideas aspired by Entrepreneurship Teaching and Training Program (ETTP) which gets showcased on Superior Entrepreneurial Expo.



Year 1 - Foundation | PBL 1

In year 1 Student understands the basics of the field through customized competency based curriculum and application through Project Based Learning level 1.

BS

Occupational Therapy

Superior's BS Occupational Therapy degree equips students with the theoretical knowledge and soft skills needed to treat patients with psychological, physical, or social problems and effectively collaborate with their families and caregivers. The course employs innovative and immersive experiential learning modules that enable graduates to seek employment in the healthcare sector or start their private practice.

Course Duration	4 Years
Semesters	8
Total Credit Hours	136

Eligibility

F.Sc Pre- Medical or equivalent with minimum 50% Marks

Semester 1

Introduction to Occupational Therapy	3
Physiology-I	3
Anatomy-I	3
Physiology-II	3
English-I	3
Computer Education	3
Islamiyat/Ethics	2

Semester 4

Assessment and Evaluation in Occupational Therapy	2
Biomechanics & Ergonomics	3
Medical Sociology	2
Social Entrepreneurship	3
Pharmacology in Rehabilitation	2
Occupational Therapy in Mental Health	3

Semester 2

Basic Pathology	3
Anatomy-II	3
Physiology-II	3
English-II	3
Basic Therapeutic Activities	3
Pakistan Studies	2

Semester 5

General Surgery	3
Occupational Therapy & Theory in Musculoskeletal	3
Occupational Therapy & Theory in Neurology	3
Medicine	3
Biochemistry & Genetics	2
Supervised Clinical Practice-I	3

Semester 7

Prosthetics and Orthotics	3
Occupational Theory & Therapy in Pediatrics	3
Research Methodology	3
Biostatistics	3
Community Medicine	2
Supervised Clinical Practice-III	3

Semester 3

Clinical Psychology	3
Kinesiology	3
Muscle Testing	3
Developmental Pediatrics	3
Occupational Therapy in Psychiatry	3
English-III	3

Semester 6

Medical Bioengineering	2
Health Care Entrepreneurship	3
Specialized Surgery	3
Administration and Management in Occupational Therapy	3
Evidence-Based Practice in Rehabilitation	3
Supervised Clinical Practice-II	3

Semester 8

Occupational Therapy in Rehabilitation	3
Therapeutic Use of Occupations/ Activities	3
Occupational Therapy in Geriatrics & Gerontology	3
Research Project	6
Supervised Clinical Practice-IV	3

To accommodate modern trends, University reserves the right to change course requirements, fee, course classifications, course content, class schedule, venue, faculty and the like, whenever it deems appropriate.



3U1M[®] WITH GLOBAL EXPERIENCE

CAREER SCOPE

- Work in the rehabilitation centers to help the disabled
- Start your own rehabilitation center
- Work with the elderly helping them to lead more independent and active lives
- Opportunities to seek global exposure for higher education, internship, job or immigration through 3U1M Stream 'Superior Go Global'

DISTINCTIVE FEATURES

- Curriculum focusing on acclimatizing patients to their environments
- Avail hands-on experience with a 600-bed-in-house hospital
- HEC approved curriculum

To apply online, please visit
admissions.superior.edu.pk
042-111-00-00-78



University Campus, Lahore

17-KM, Main Raiwind Road, Lahore.
Ph: 042-38103777

Sargodha Campus

10-KM, Lahore Road, Sargodha.
Ph: 048-211-00-00

Faisalabad Campus

13-KM Satiana Road, Near Khanuana
Bypass, Faisalabad. Ph: 041-8792007-8

Rahim Yar Khan

East Bank Sadiq Canal Road, Darri Sanghi,
Rahim Yar Khan. Ph: 068-5958009