



**SUPERIOR
UNIVERSITY**



Prof. Dr. Rubina Anwaar
A lady of education, professional and academic in medical science and health care field with special focus on

BS Public Health

FACULTY OF ALLIED HEALTH SCIENCES



**RANKED NO. 1 IN
QUALITY OF EDUCATION
IN PAKISTAN**

WORLD RANK IN
QUALITY OF EDUCATION
101-200

OVERALL RANK IN
WORLD'S TOP
401-600

AMONG THE
TOP 10
UNIVERSITIES OF
PAKISTAN

3U1M[®]

3 Years in University and 1 year in Market

3U1M is our unique and distinctive framework which is focused on enabling and empowering the youth to create social and economic impact. This research-informed experiential learning program has been designed to ensure student success by teaching not only theories but their practical implications to equip our students with the skills of 21st-century graduates. This employability ensured program is a milestone in our mission for developing an economically Superior Pakistan.

Year 2 - Exploration PBL 2

In year 2 students explore the emerging concepts of the relevant industry and gain experiential learning through Project based learning Level 2.

Freshman Program

A rigorous on-boarding program for a smooth transition to university education through IQ & EQ Accelerators preparing students for entering university life.

1M-Market Intensive Year

For the final Market Intensive Year "1M" (one year in the market), we have designed four indigenous career streams i.e., Design Challenge, Startup, Scaleup & Superior Go Global so our students may choose any track according to their aptitude.

Career Pathways

Startup: to become a successful entrepreneur by getting incubated at our **Innovation District 92 (ID-92)**



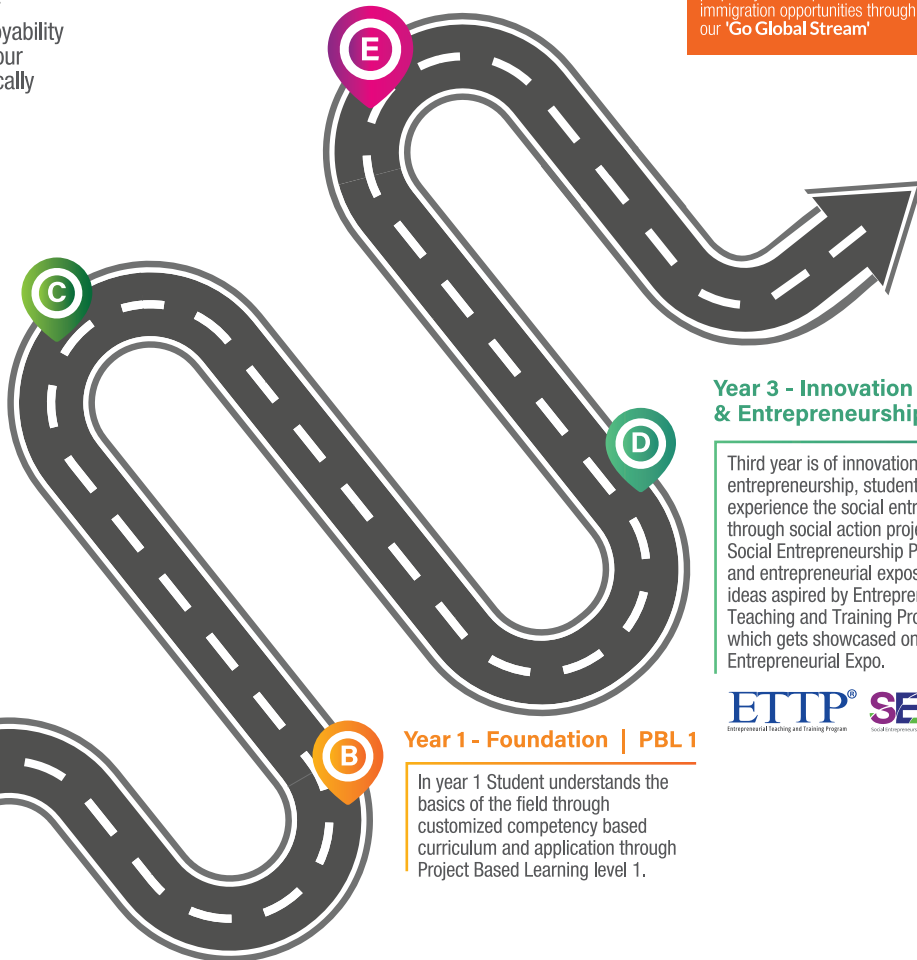
Scaleup: to uplift your family business by getting trained at our accelerator "ScaleupPk"



Design Challenge: to become a valuable resource for corporate world by solving a real-time industry problem following **Design Thinking** approach



Superior Go Global: to prepare you to explore career and immigration opportunities through our 'Go Global Stream'



Year 3 - Innovation & Entrepreneurship | PBL 3

Third year is of innovation and entrepreneurship, students will experience the social entrepreneurship through social action projects under Social Entrepreneurship Program (SEP) and entrepreneurial exposition of new ideas aspired by Entrepreneurship Teaching and Training Program (ETTP) which gets showcased on Superior Entrepreneurial Expo.



Year 1 - Foundation | PBL 1

In year 1 Student understands the basics of the field through customized competency based curriculum and application through Project Based Learning level 1.

BS

Public Health

The BS Public Health program offered at Superior allows its students to gain the vital knowledge and experience that can be applied to any area of public health practice. This program focuses on employment-orientated knowledge and skills development that ranges from community empowerment to statistical analysis and epidemiology to policy development leading to employment in public, private, and non-profit healthcare.

Course Duration	4 Years
Semesters	8
Total Credit Hours	132

Eligibility

FSc (Pre Medical) or Equivalent with minimum 45% marks.

Semester 1

English I	3
Sociology of Health and Diseases	3
Life Sciences Biology	3
Introduction to Computer Mathematics	3

Semester 4

Entomology	3
Professional Ethics	3
Basic Epidemiology	3
Health Promotion, Advocacy & Social Mobilization	3
Social Entrepreneurship	3
Basic Biostatistics	3

Semester 2

Islamic Studies	2
Principles of Psychology	3
Medical Anthropology	3
English II	3
Personal Hygiene	3
Basic Statistics	3

Semester 5

Community Nutrition	3
Community Pediatrics	3
Fundamental Principles of Infectious Disease	3
Non-Communicable Disease Epidemiology	3
Epidemiology of Infectious Diseases	3

Semester 7

Mental Health	3
Health Marketing	3
Research methodology	3
Health Economics	3
Quality Management in Health Care	3

Semester 3

Basic Computer Skills	3
Pakistan studies	2
Population Dynamics	3
Primary Health Care	3
Concept of Health and Disease	3
English III	3

Semester 6

Reproductive Health	3
Environment & Occupational Health	3
Health Policy and Planning	3
District Health Management	3
Health Professional Education	3
Health-Care Entrepreneurship	3

Semester 8

Microbiology	3
School Health	2
Parasitology	3
Sports Medicine	3
Research Project	6



3U1M[®] WITH GLOBAL EXPERIENCE

CAREER SCOPE

- Acquire employment as an Industrial Hygienist
- Land jobs as a Quality Assurance Officer in public and private sector hospitals
- Start your career as an NGO Program Officer
- Opportunities to seek global exposure for higher education, internship, job or immigration through 3U1M Stream 'Superior Go Global'

DISTINCTIVE FEATURES

- Internationally recognized project-based curriculum
- HEC Approved Nomenclature
- 600-bed-in-house hospital with real-time exposure related to public health practice

To apply online, please visit
admissions.superior.edu.pk
042-111-00-00-78



University Campus, Lahore

17-KM, Main Raiwind Road, Lahore.
Ph: 042-38103777

Sargodha Campus

10-KM, Lahore Road, Sargodha.
Ph: 048-211-00-00

Faisalabad Campus

13-KM Satiana Road, Near Khanuana
Bypass, Faisalabad. Ph: 041-8792007-8

Rahim Yar Khan

East Bank Sadiq Canal Road, Darri Sanghi,
Rahim Yar Khan. Ph: 068-5958009